

GOSEN®

ANSWER

CASTING

SALTWATER GAME PE 16BRAIDED LINE

PE×16



Stronger! Smoother!

A dedicated casting 16-strand PE line that expands your casting possibilities!



GOSEN

ANSWER CASTING
PE×16

[CLICK HERE](#)

Line up

- 150m
 - GCA16P1508 0.8 (20lb) / 9.1kg
 - GCA16P1510 1 (23lb) / 10.5kg
 - GCA16P1515 1.5 (33lb) / 15.1kg
 - GCA16P1520 2 (41lb) / 18.5kg
- 200m
 - GCA16P2008 0.8 (20lb) / 9.1kg
 - GCA16P2010 1 (23lb) / 10.5kg
 - GCA16P2015 1.5 (33lb) / 15.1kg
 - GCA16P2020 2 (41lb) / 18.5kg

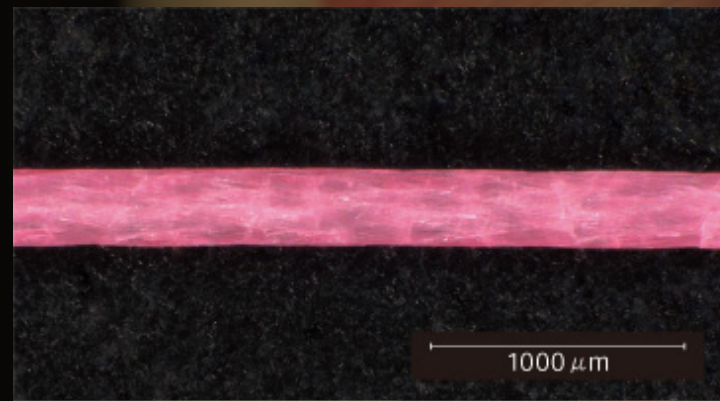


FEATURES

01

Seeking a higher level of strength with a 16-strand design.

"The 16-strand braid is constructed with finer fibers and a higher density than the 8-strand braid (see diagram below). Compared to our 8-strand line, the number of filaments increases by 1.5 times, resulting in a smoother surface, while the pitch increases by 1.3 times, enhancing structural stability. This leads to an increased strength rating, achieving a higher level of durability and allowing for a stable fight."



ANSWER CASTING PE×16



Our 8-strand PE line.

02

Overwhelming smoothness that makes a difference in casting distance.

"Thanks to the 16-strand braid, the line surface is smoother, increasing casting distance! GOSEN's unique 'SG processing' enhances 'stiffness' and 'strength,' providing exceptional handling."

03

High-visibility line color.

Featuring a high-visibility pink color that enhances visibility in all conditions, from daytime to nighttime.

GOSEN®



ANSWER CASTING PE×16

[CLICK HERE](#)